

IE Option “M”

Version: 1.0

March 25, 2010

MTDoE

Interface for Communication and Synchronization
of an MTDoE System

Supplement to the “Functional Description and Specifications Module IE”

CONTENTS

| | | |
|----------|------------------------|----------|
| A1 | REVISION HISTORY | |
| A2 | COPYRIGHT | |
| A3 | GENERAL REMARKS | |
| 1 | OVERVIEW | 3 |
| 2 | MTD | 4 |
| 2.1 | OPEN THE CONFIGURATION | 4 |
| 2.2 | STATUS | 5 |
| 2.3 | GROUP PASSWORD | 6 |

A1 Revision History

| No. | Date | Subject |
|-----|----------------|--|
| 0.n | | Preliminary documents, changes without notice. |
| 1.0 | March 25, 2010 | First released document. |

A2 Copyright

Copyright © Alpermann+Velte Electronic Engineering GmbH 2002. All rights reserved. No part of this publication may be reproduced, translated into another language, stored in a retrieval system, or transmitted, in any form or by any means, electronic, mechanical, photocopying, recording, or otherwise without the prior written consent of Alpermann+Velte Electronic Engineering GmbH.

Printed in Germany.

Technical changes are reserved.

All brand and product names mentioned herein are used for identification purposes only, and are trademarks or registered trademarks of their respective holders.

Information in this publication replaces all previously published information.

Alpermann+Velte Electronic Engineering GmbH assumes no responsibility for errors or omissions. Neither is any liability assumed for damages resulting from the use of the information contained herein.

For further information please contact your local dealer or:

Alpermann+Velte

Electronic Engineering GmbH

Otto-Hahn-Str. 42

D-42369 Wuppertal

Phone: ++49 - (0)202 - 244 111 0

Fax: ++49 - (0)202 - 244 111 5

E-Mail: info@alpermann-velte.com

Internet: <http://www.alpermann-velte.com>

A3 General Remarks

This manual is a supplement to the "Functional Description & Specifications Module IE" manual. It describes a special feature of the **IE** module realized by an optional firmware.

1 Overview

Alpermann+Velte has developed a system called the Multiple Time Display (MTD) system. An MTD system consists of a central generator unit, control units, digital displays and/or studio clocks. The central MTD generator (RUB GT or RUB GL module) is the time & date reference and manages stop timers.

The **MTD_oE** system utilizes the Ethernet to transport the MTD data as well as to communicate between control units and central generator. The central generator transmits MTD data to the **RUB IE** (with **option M**) Ethernet module via the internal *TC_link* interface of the RUBIDIUM system, the RUB IE module then opens the gates to the network.

The MTD devices have to be synchronized to a common time base; this will be done utilizing the NTP method. The IE module operates as the NTP server; NTP clients (even units which are not part of the MTD_oE system) can choose this IE module as their time & date reference. Thus the option M includes the option N.

Please refer to the following documents as well:

Concerning the IE module: „IE: Functional Description and Specifications“.


Concerning MTD_oE: “MTD System“ manual.

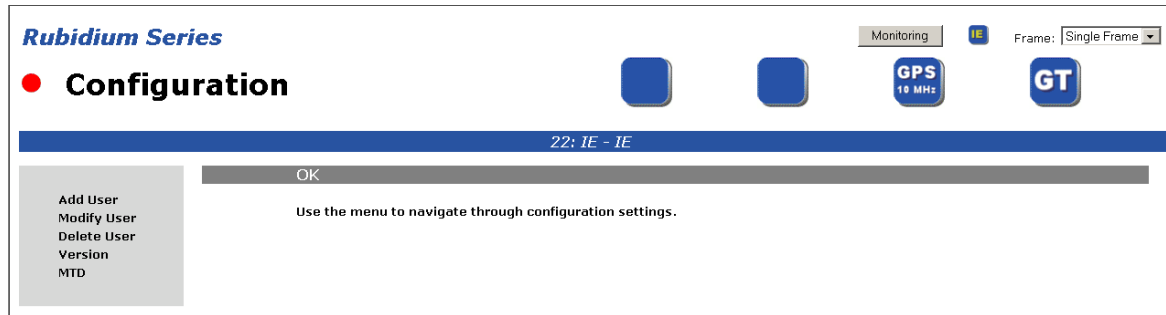
Concerning NTP: “NTP Server“ manual.

2 MTD

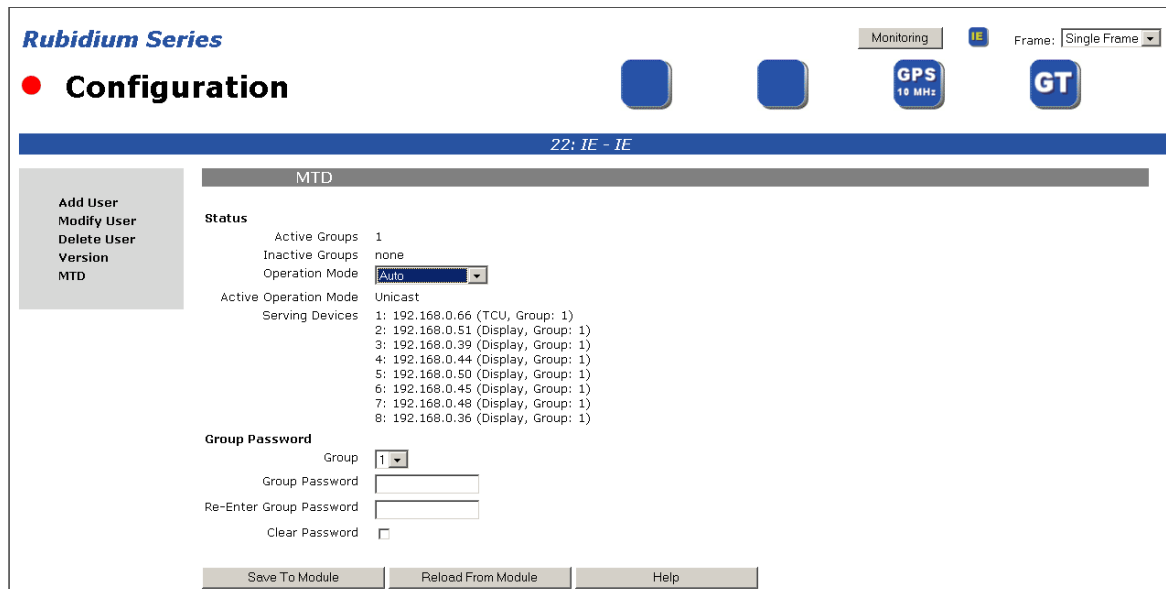
2.1 Open the Configuration

Open the **Configuration** page with your browser.

Click on the  button to open the IE function menu.



The "MTD" menu indicates status information and enables a basic set-up.



2.2 Status

Shows some status information and enables to set up the network communication method.

Status

| | |
|-----------------------|--|
| Active Groups | 1 |
| Inactive Groups | none |
| Operation Mode | Auto |
| Active Operation Mode | Unicast |
| Serving Devices | 1: 192.168.0.66 (TCU, Group: 1) 2: 192.168.0.51 (Display, Group: 1) 3: 192.168.0.39 (Display, Group: 1) 4: 192.168.0.44 (Display, Group: 1) 5: 192.168.0.50 (Display, Group: 1) 6: 192.168.0.45 (Display, Group: 1) 7: 192.168.0.48 (Display, Group: 1) 8: 192.168.0.36 (Display, Group: 1) |

Active Groups Shows all active MTD groups. A group becomes "active" for this IE module if this IE module receives data for this group from an MTD central generator and this IE module is responsible for the Ethernet communication of this group.

Inactive Groups Shows all inactive MTD groups. A group becomes "inactive" for this IE module if this IE module receives data for this group from an MTD central generator but an other IE module is responsible for the Ethernet communication of this group.

Operating Mode *Unicast* and *Broadcast* describe the way of sending messages in computer networking. *Unicast* transmission sends a data packet to a single destination host; *Broadcast* delivers information to a group of destinations simultaneously. Please select:

- Auto (= default)
- Broadcast local
- Unicast only
- Broadcast only

Active Operating Mode Indicates the selected or used transmission method.

Serving Devices Shows all devices which are in communication with this IE module.



After any change press the "Save To Module" button to store the entry.

2.3 Group Password

Any MTD group can receive a password. If a password has been set for a group, the **UD SC Config.exe** program has access to the devices of this group only if the password has been entered correctly.

Group Password

Group

Group Password

Re-Enter Group Password

Clear Password

After any change press the "Save To Module" button to store the entry.